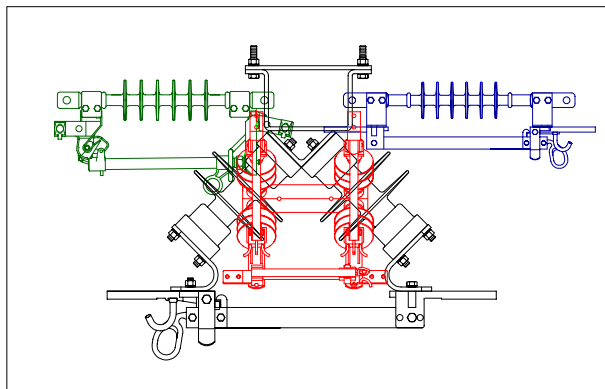




HIGH VOLTAGE PRODUCTS SWITCHES , HARDWARE, FIBERGLASS



BEL VOLT

History

Established in 1982, Firon Industries has developed into Canada's premiere and preferred manufacturer of non-automated, airbreak switches in the high voltage, electrical utility industry. Having developed the lightest, most durable and most advanced switches in the industry, Firon is recognized for its innovation and for its dedication to the advancement of new, superior quality products; and based on our proven track record, these products are certain to enhance the safety and simplicity of any high voltage operation.

Firon also manufactures a complete line of switch accessories and other hardware items, such as cutout and arrester brackets, pole top extensions, dead-end clamps and stirrups.

Corporate Office

1350 Birchmount Road
Scarborough, Ontario
M1P 2E4
Tel: 416-757-2277
Fax: 416-757-9595

www.firon.ca

www.belvolt.com

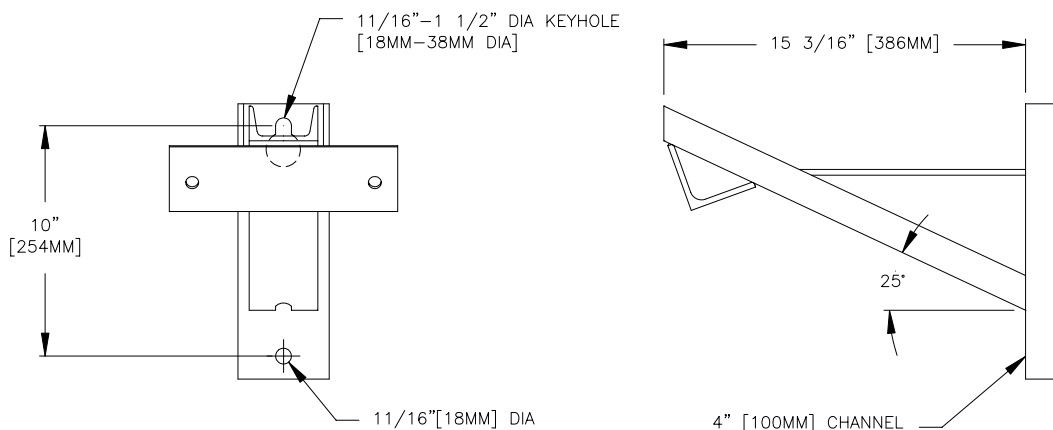
BP & FBP SWITCH BRACKET

BY-PASS SWITCH BRACKET

MATERIAL: HOT DIP GALVANIZED STEEL

CATALOG NO.: 1063

WEIGHT: 16 LBS [7.3 KG] EA

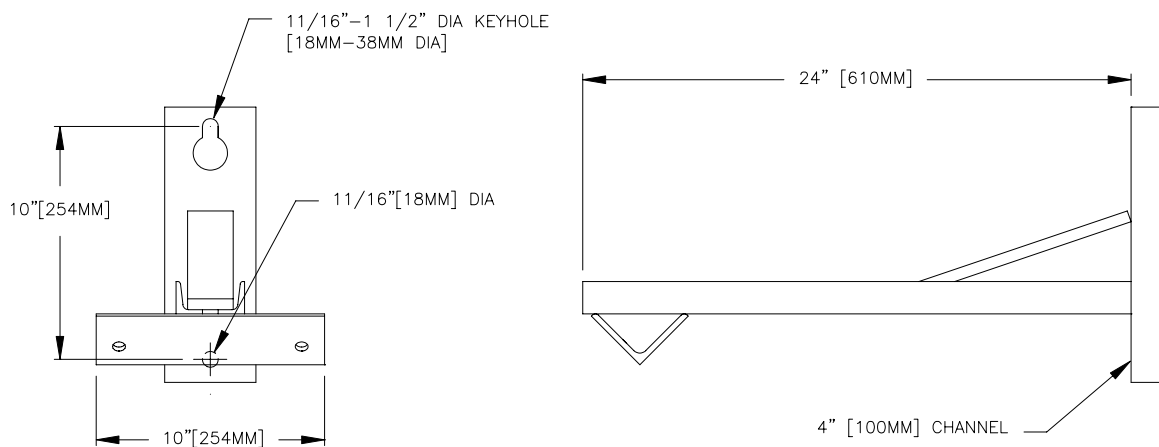


FUSED BY-PASS SWITCH BRACKET

MATERIAL: HOT DIP GALVANIZED STEEL

CATALOG NO.: 1062

WEIGHT: 21 LBS [9.5 KG] EA

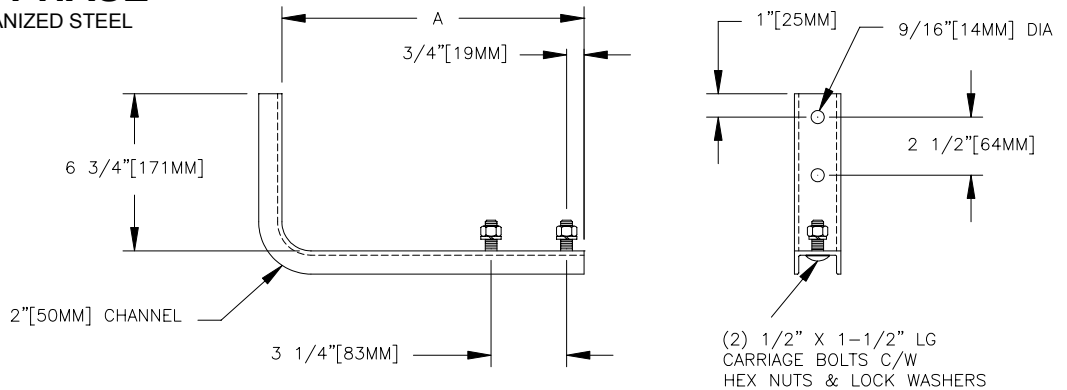


CUTOUT & ARRESTER BRACKET

CHANNEL TYPE A

SINGLE PHASE

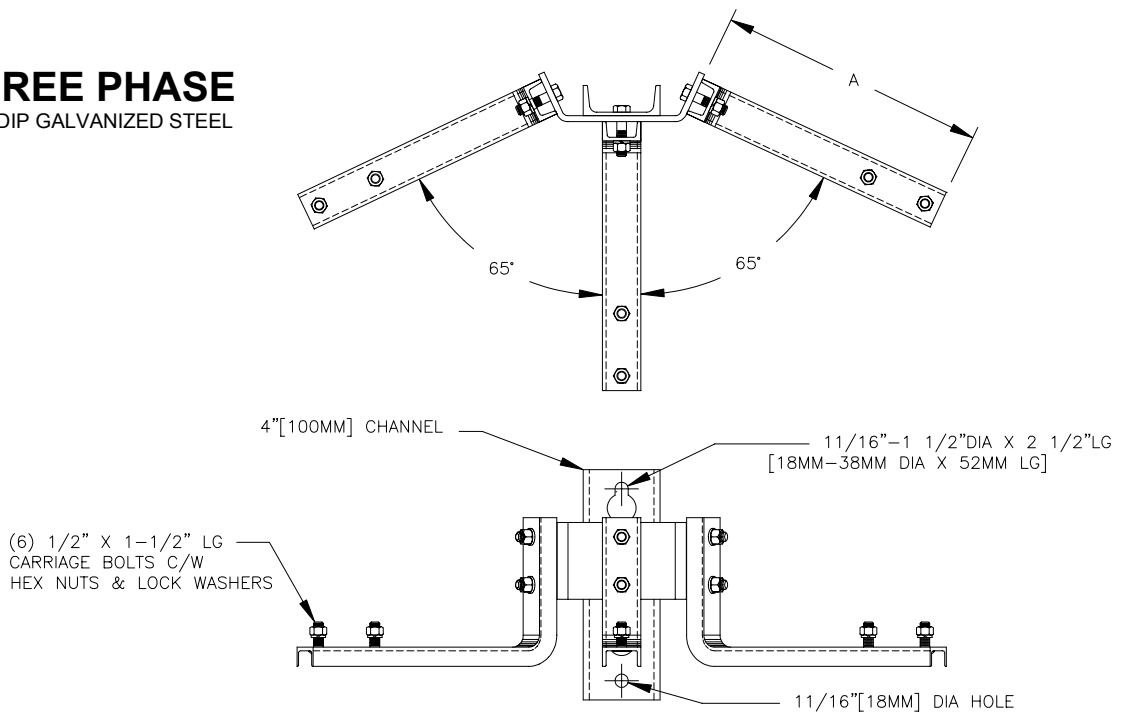
HOT DIP GALVANIZED STEEL



CATALOG NO.	KV	A	WEIGHT
BF3280	15	14" 356MM	4.5 LB 2 KG
BF3279	28	25" 635MM	7.0 LB 3 KG

THREE PHASE

HOT DIP GALVANIZED STEEL



CATALOG NO.	KV	A	WEIGHT
BF3360	15	14" 356MM	24LBS 11KG
BF3361	28	25" 635MM	31LBS 14KG

CUTOUT & ARRESTER BRACKET

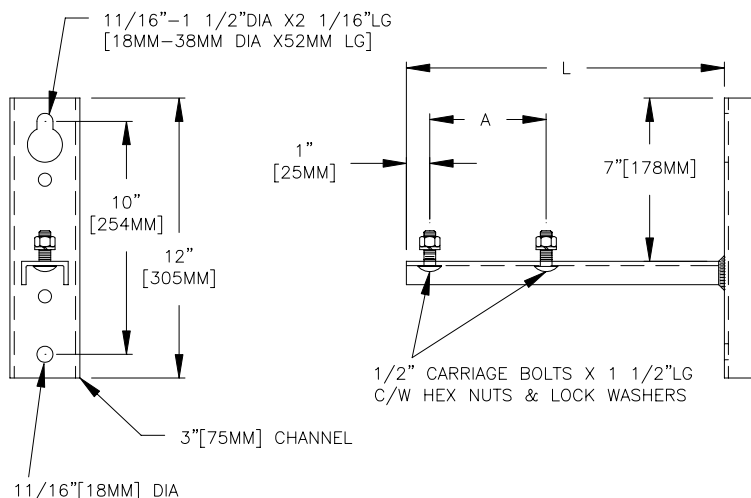
CHANNEL TYPE B

SINGLE PHASE

HOT DIP GALVANIZED STEEL

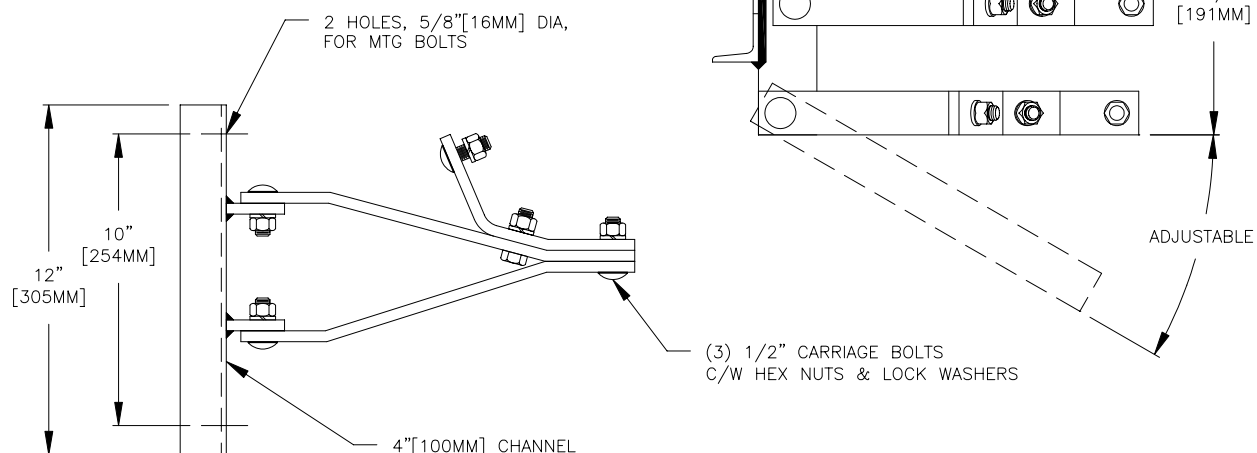
CATALOG NO.	L	A	WEIGHT
BF3286	13" 330MM	6" 152MM	6 LBS 2.7 KG
BF3282	19" 483MM	6" 152MM	8.5 LBS 3.8 KG
BF3283	24" 610MM	10" 254MM	9.5 LBS 4.3 KG

OTHER SIZES AVAILABLE ON REQUEST



THREE PHASE FOLDING TYPE

CATALOG NO.	MATERIAL	WEIGHT
BF3335	GALVANIZED STEEL	30 LBS [13KG]
BF3335A	ALUMINUM	12 LBS [5.4KG]



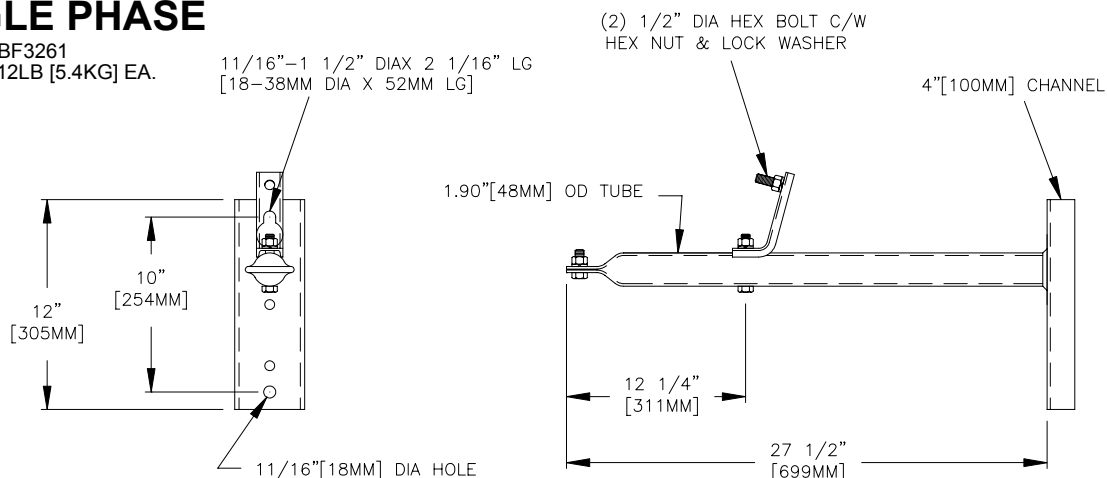
CUTOUT & ARRESTER BRACKET

ROUND TUBE TYPE

HOT DIP GALVANIZED STEEL

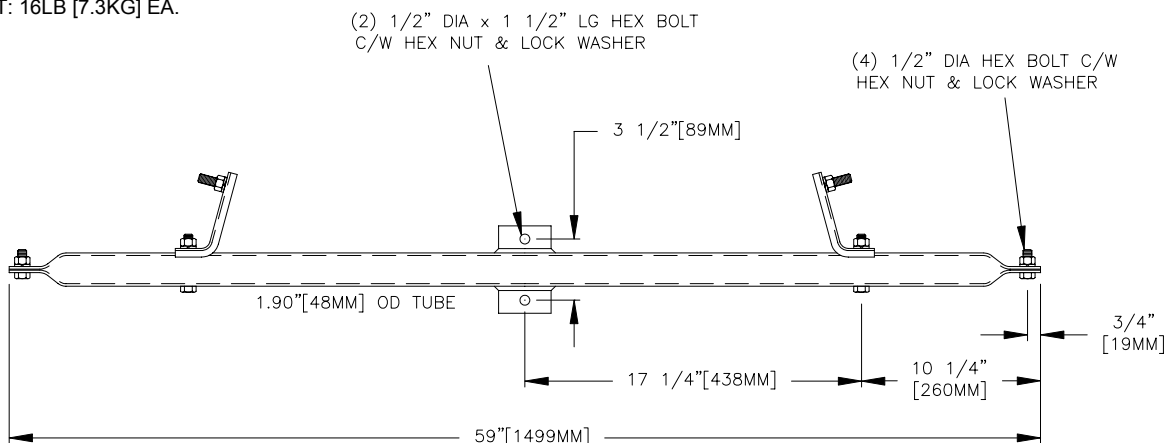
SINGLE PHASE

CAT NO.: BF3261
WEIGHT: 12LB [5.4KG] EA.



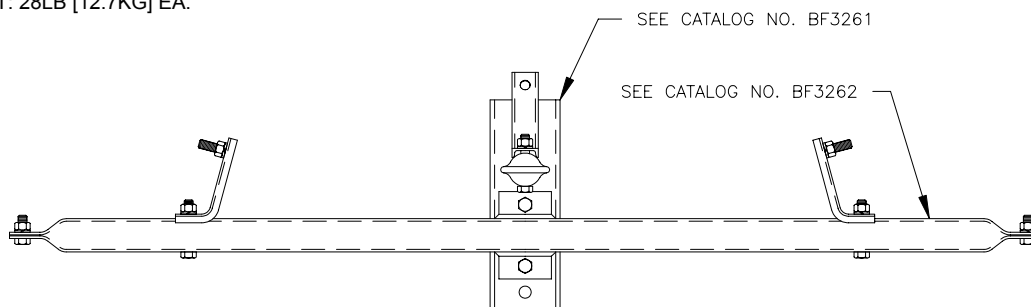
DOUBLE PHASE

CAT NO.: BF3262
WEIGHT: 16LB [7.3KG] EA.



THREE PHASE

CAT NO.: BF3263
WEIGHT: 28LB [12.7KG] EA.



CUTOUT & ARRESTER BRACKET

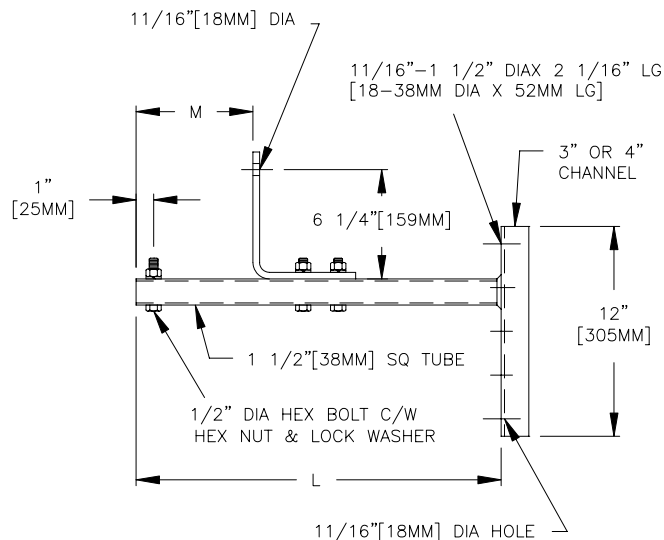
SQUARE TUBE TYPE

HOT DIP GALVANIZED STEEL

SINGLE PHASE

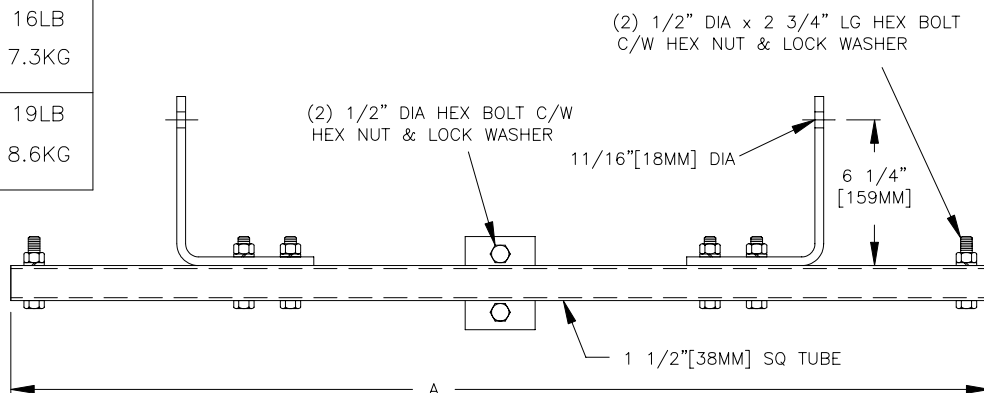
CATALOG NO.	L	CHANNEL SIZE	M	WEIGHT
BF3258	27 1/2" 699MM	3" 75MM	9 1/8" 232MM	12LB 5.4KG
BF3240	31" 787MM	3" 75MM	10 9/16" 268MM	13LB 5.9KG
BF3259	27 1/2" 699MM	4" 100MM	9 1/8" 232MM	13LB 5.9KG
BF3241	31" 787MM	4" 100MM	10 9/16" 268MM	14LB 6.3KG

OTHER SIZES AVAILABLE ON REQUEST



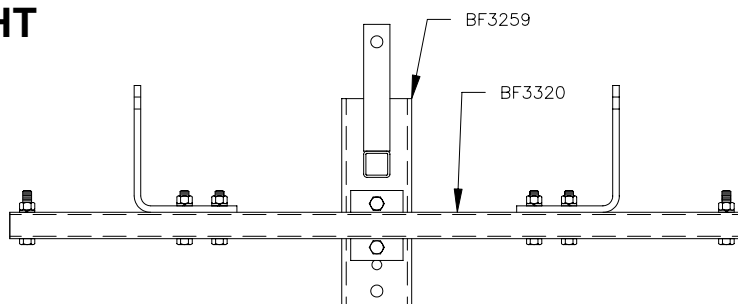
DOUBLE PHASE-STRAIGHT

CATALOG NO.	A	WEIGHT
BF3310	42" 1067MM	16LB 7.3KG
BF3320	59" 1499MM	19LB 8.6KG



THREE PHASE-STRAIGHT

TO ORDER A THREE PHASE BRACKET,
SELECT ONE SINGLE PHASE AND
ONE DOUBLE PHASE BRACKET
i.e. SINGLE PHASE - BF3259,
DOUBLE PHASE - BF3320



CUTOUT & ARRESTER BRACKET

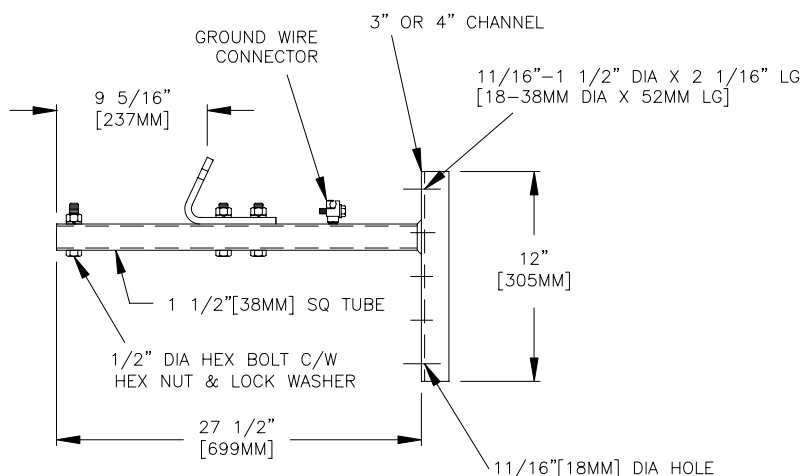
SQUARE TUBE TYPE

HOT DIP GALVANIZED STEEL

SINGLE PHASE

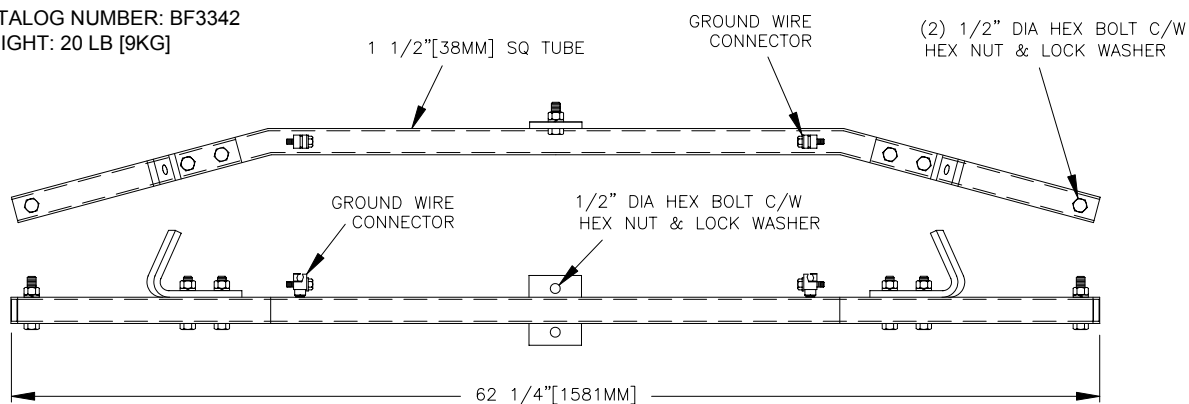
CATALOG NO.	CHANNEL SIZE	WEIGHT
BF3341	4" 102MM	12LB 5.4KG
BF3343	3" 75MM	13LB 5.9KG

OTHER SIZES AVAILABLE
ON REQUEST



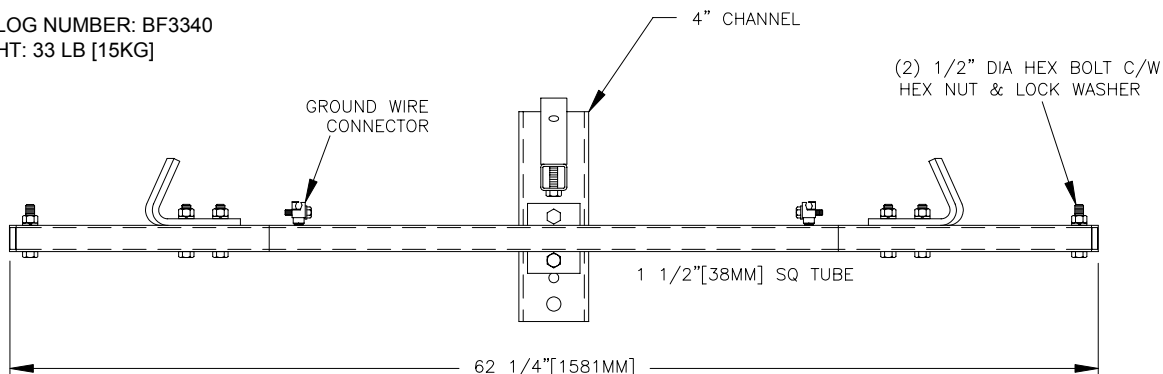
DOUBLE PHASE-CURVED

CATALOG NUMBER: BF3342
WEIGHT: 20 LB [9KG]



THREE PHASE-CURVED

CATALOG NUMBER: BF3340
WEIGHT: 33 LB [15KG]

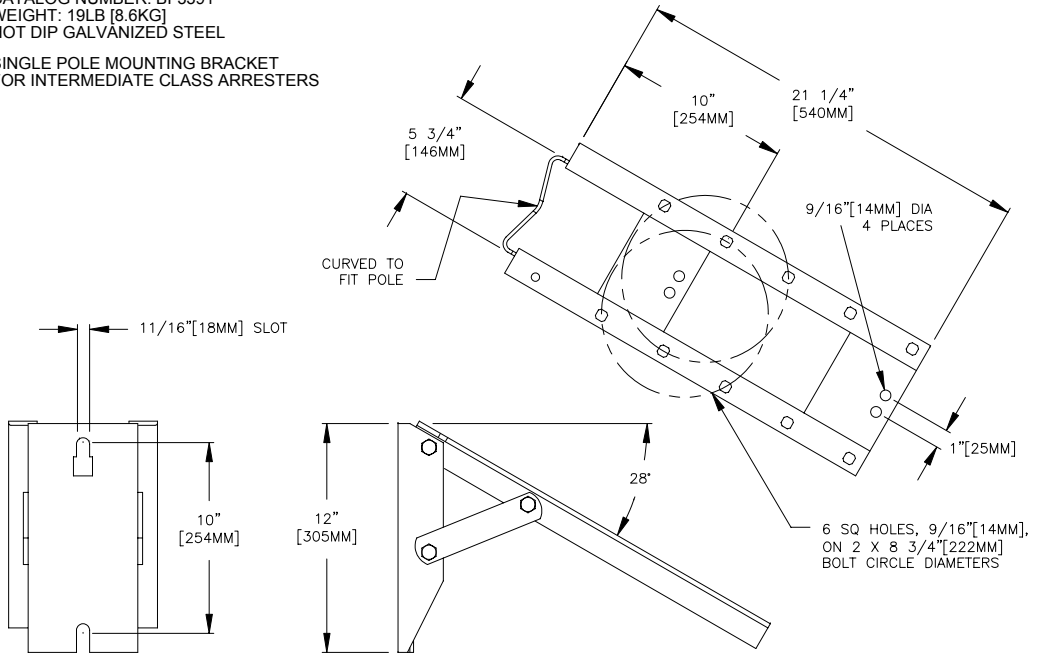


ARRESTER BRACKET

POLE MOUNTING BRACKET WITH 28° SLOPE

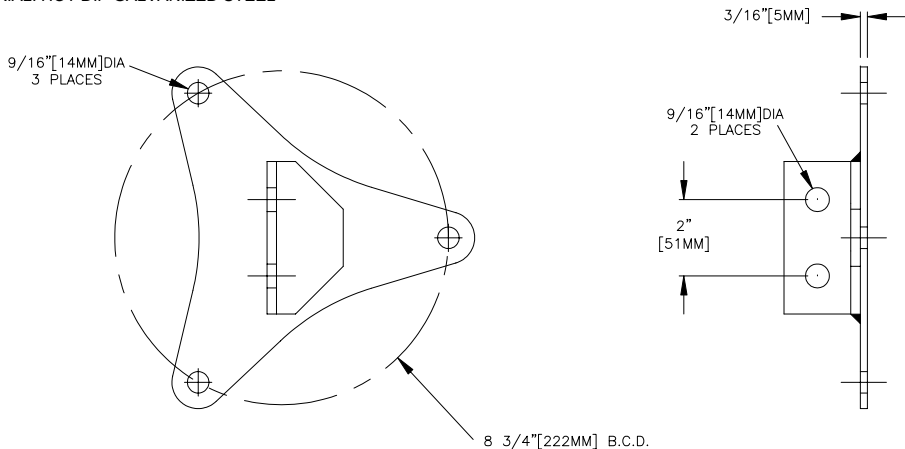
CATALOG NUMBER: BF3391
WEIGHT: 19LB [8.6KG]
HOT DIP GALVANIZED STEEL

SINGLE POLE MOUNTING BRACKET
FOR INTERMEDIATE CLASS ARRESTERS



ARRESTER BRACKET

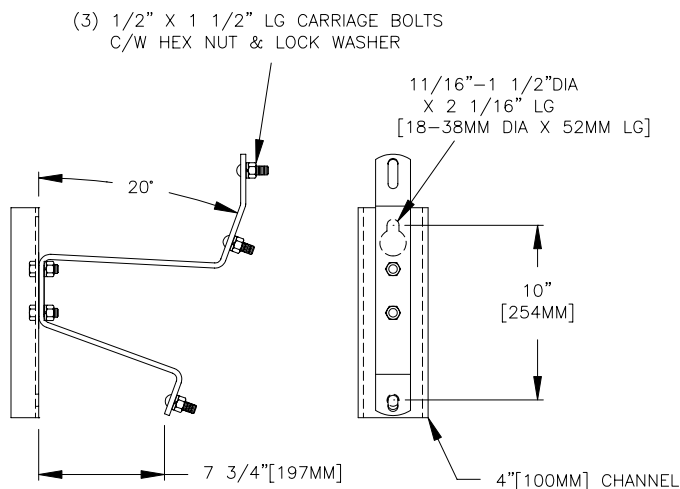
CATALOG NO.: BF3001
WEIGHT: 2.75 LB[1.1KG]
MATERIAL: HOT DIP GALVANIZED STEEL



SM SWITCH & ARRESTER BRACKET

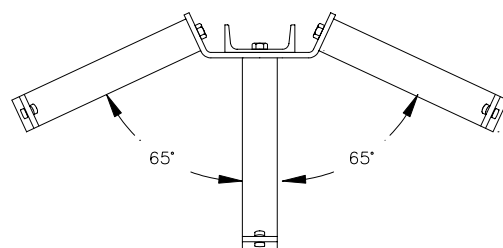
FIRON BRACKETS ARE DESIGNED FOR SUPPORTING THE FIRON SURFACE MOUNT DISCONNECT SWITCH. SINGLE AND THREE PHASE BRACKETS ARE CONSTRUCTED FROM HOT DIP GALVANIZED STEEL.

SINGLE PHASE



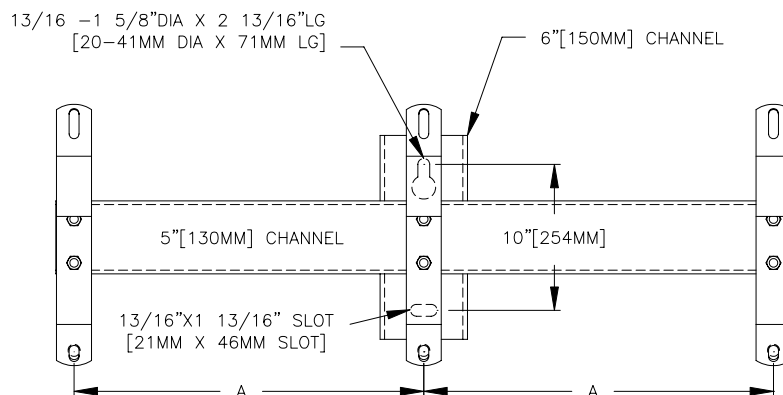
SWITCH	CATALOG NO.	WEIGHT
15KV & 28KV	BF3380	11.5LB [5.2KG]

THREE PHASE - 65° APART

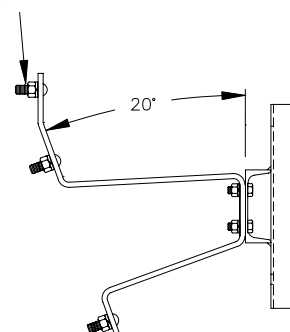


SWITCH	CATALOG NO.	WEIGHT
15KV & 28KV	BF3381	28LB [12.7KG]

THREE PHASE - PARALLEL



(9) 1/2" x 1 1/2" LG CARRIAGE BOLT
C/W LOCK WASHER & HEX NUT



SWITCH	CATALOG NO.	"A"	WEIGHT
15KV	BF3362-15	24" [610MM]	55LB [25KG]
28KV	BF3362-28	30" [762MM]	62LB [28KG]
35KV	BF3362-35	36" [914MM]	69LB [31KG]

FIBERGLASS MID-SPAN BRACKET

FOR DEAD ENDING TRIPLEX SERVICE TO OPEN WIRE SECONDARY BUS AT MID-SPAN.

MATERIAL:

THE INSULATING BAR OF THE BRACKET IS MADE FROM A HIGH STRENGTH FIBERGLASS REINFORCED POLYESTER RESIN UV STABILIZED.

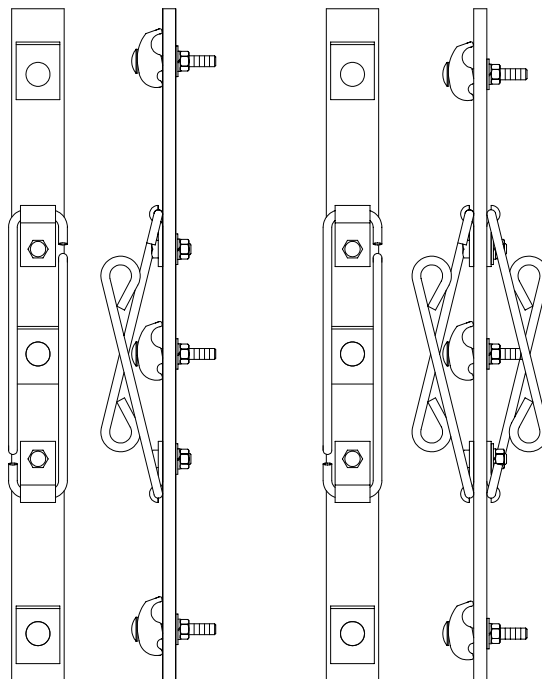
ALL FASTENERS AND METAL COMPONENTS ARE MADE FROM HOT DIP GALVANIZED STEEL

COLOUR: MUNSELL GREY

MINIMUM WET DIELECTRIC TEST VALUE OF INSULATING BAR IS 2500 VOLTS PER INCH [984 VOLTS/CM]

ULTIMATE SAFE TRANSVERSE WORKING LOAD IS 674 LBS [3 KN] PER SIDE ACCORDING TO CSA C83.

THE BRACKETS ARE PACKED WITH PULL RING RODS FOLDED FLAT ONTO THE BAR FOR EASY STORAGE.



BF3700

SINGLE TAKEOFF

BF3700-2

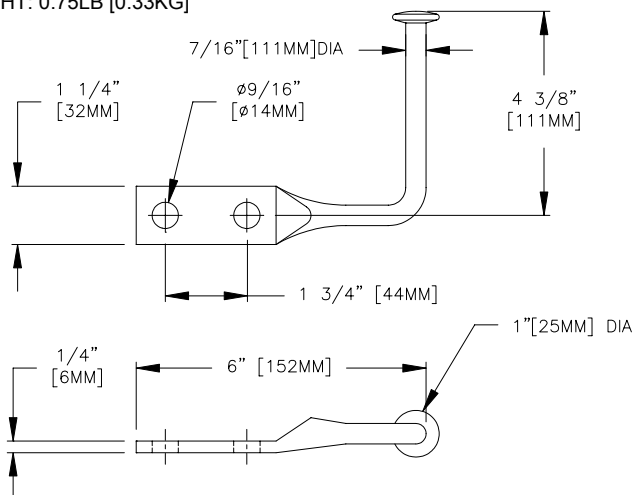
DOUBLE TAKEOFF

CATALOG NUMBER	CONDUCTOR RANGE	NUMBER OF CONDUCTORS	SPACING		NUMBER OF SERVICE TAPS	WT/100	
			IN.	MM.		LBS	KG
BF3700	NO. 6 - 477	3	8	203	1	180	82
BF3700-2	NO. 6 - 477	3	8	203	2	200	91
BF3690	NO. 6 - 477	3	10	254	1	200	91
BF3690-2	NO. 6 - 477	3	10	254	2	220	100
BF3710	NO. 6 - 477	3	13	330	1	220	100
BF3710-2	NO. 6 - 477	3	13	330	2	240	109
BF3720	NO. 6 - 477	4	8	203	1	260	118
BF3720-2	NO. 6 - 477	4	8	203	2	280	127
BF3721	NO. 6 - 477	5	8	203	1	300	136
BF3721-2	NO. 6 - 477	5	8	203	2	320	145
BF3680	NO. 6 - 477	3	18	457	1	320	145
BF3680-2	NO. 6 - 477	3	18	457	2	340	155

GROUND STIRRUP

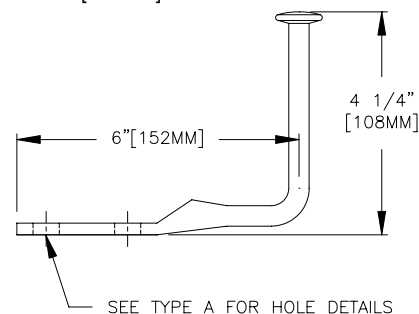
TYPE A

MATERIAL: BRONZE
CATALOG NO: ZF9914
WEIGHT: 0.75LB [0.33KG]



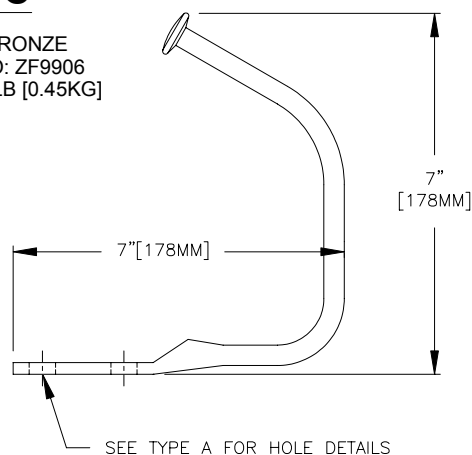
TYPE B

MATERIAL: BRONZE
CATALOG NO: ZF9908
WEIGHT: 0.75LB [0.33KG]



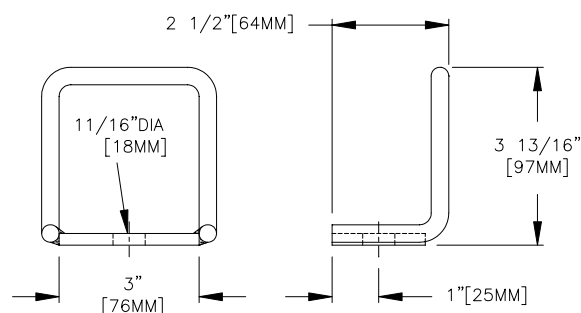
TYPE C

MATERIAL: BRONZE
CATALOG NO: ZF9906
WEIGHT: 1.0LB [0.45KG]



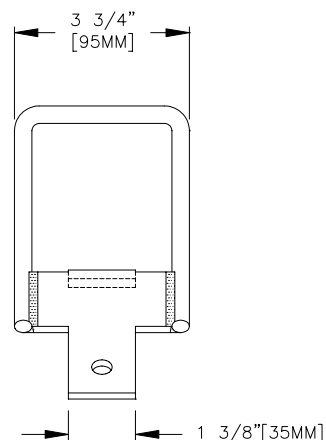
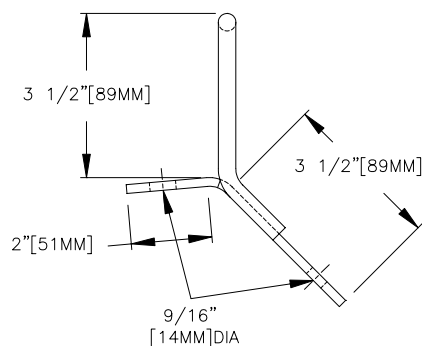
TYPE D

MATERIAL: COPPER
CATALOG NO: ZF9909
WEIGHT: 0.90LB [0.40KG]



TYPE E

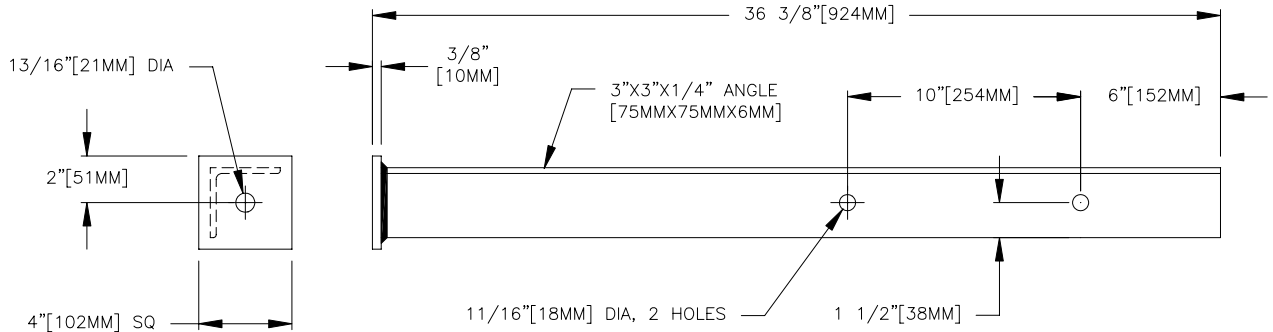
MATERIAL: COPPER
CATALOG NO: ZF9900
WEIGHT: 1.10LB [0.50KG]



POLE TOP BRACKET

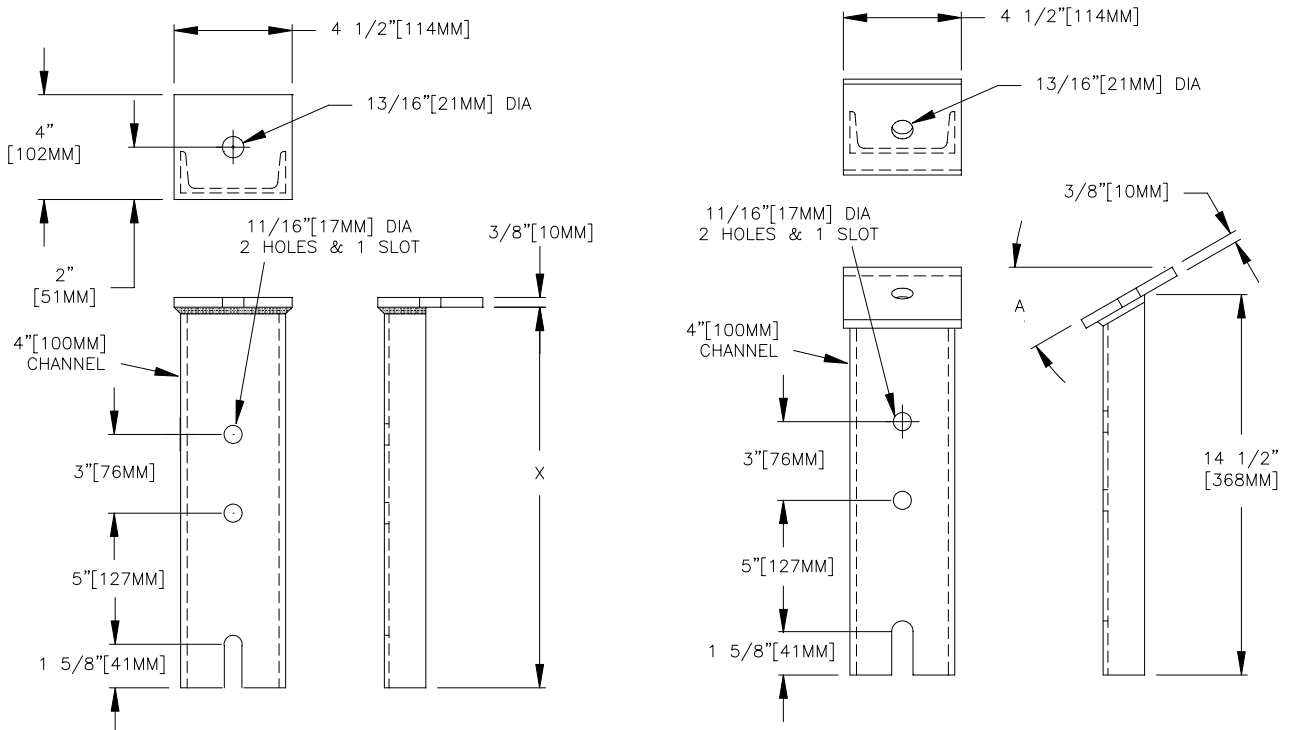
POLE TOP - ANGLE

HOT DIP GALVANIZED STEEL
CATALOG NUMBER: BF7501
WEIGHT: 20LB [9KG]



POLE TOP - CHANNEL

HOT DIP GALVANIZED STEEL



CATALOG NUMBER

BF3053
BF3055
BF3059

DIM "X"

48" [1219MM]
14 7/8" [378MM]
54" [1372MM]

WEIGHT

22LB[10KG]
9LB[4KG]
28LB[13KG]

CATALOG NUMBER

BF3055-15
BF3055-30

ANGLE "A"

15°
30°

WEIGHT

9LB[4KG]
9LB[4KG]

STRAIN LINK & YOKE PLATE

YOKE PLATES

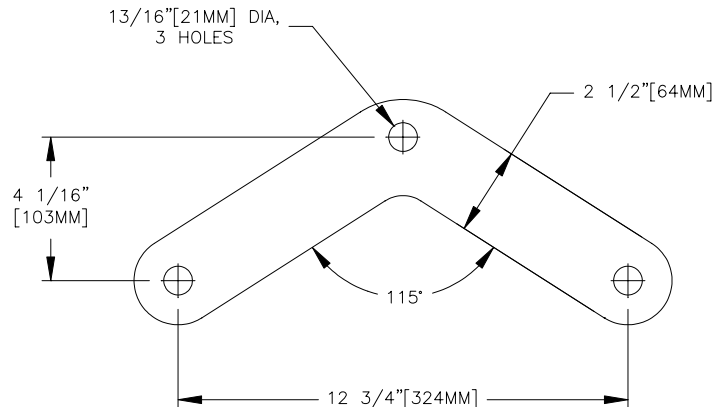
BOOMERANG STYLE

MATERIAL: STEEL PER CSA G40.21 GR 44W
TENSILE STRENGTH 65 KSI [448MPa]

FINISH: HOT DIP GALVANIZE

CATALOG NUMBER	MATERIAL THICKNESS	WEIGHT PER 100
PF7900	1/2" 13MM	550LB 250KG
PF7905	5/8" 16MM	700LB 318KG

OTHER SIZES AND DRILLING AVAILABLE ON REQUEST



STRAIN LINKS

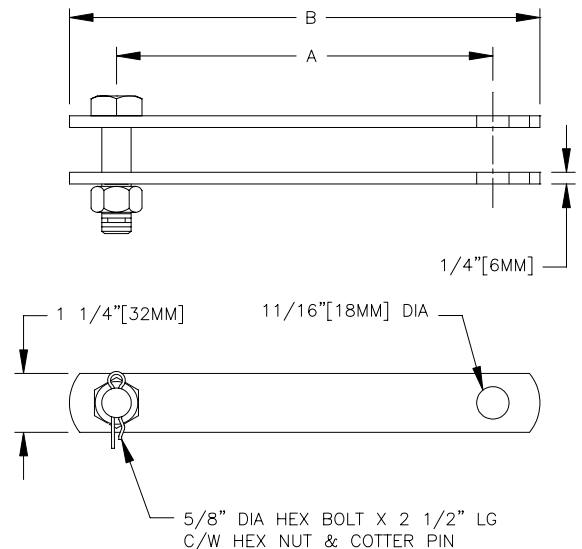
USED TO PROVIDE ADDITIONAL CLEARANCE BETWEEN
PRIMARY CONDUCTOR AND GROUND

HOT DIP GALVANIZED STEEL

RING FILLS OR SPACING WASHERS - ORDER SEPARATELY

CATALOG NUMBER	A	B	WEIGHT PER 100
CF4710	7 1/2" 191MM	9" 229MM	210LB 95KG
CF4711	13 1/2" 343MM	15" 381MM	320LB 145KG
CF4712	19 1/2" 495MM	21" 533MM	400LB 182KG
CF4713	27 1/2" 699MM	29" 737MM	560LB 254KG
CF4714	32" 813MM	33 1/2" 851MM	640LB 291KG
CF4715	18" 457MM	19 1/2" 495MM	375LB 170KG

OTHER SIZES AND DRILLING AVAILABLE ON REQUEST



CABLE SUPPORT

CABLE SUPPORT ASSEMBLIES

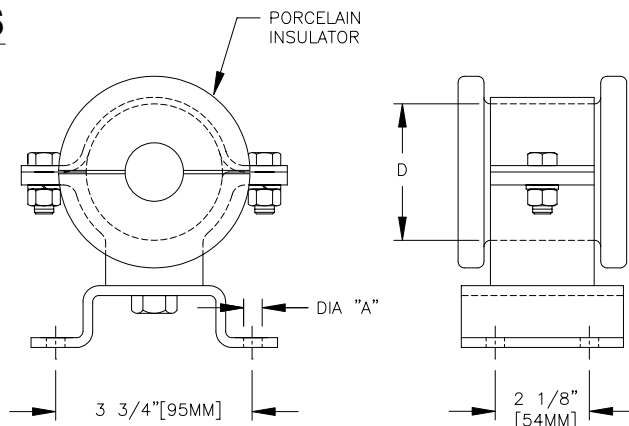
BASE MOUNT BRACKET

USED TO SUPPORT CABLES MOUNTED ON CEILINGS OR WALLS OF UNDERGROUND VAULTS.

INSULATOR IS SECURED WITH TWO 3/8" DIA BOLTS, HEX NUTS AND LOCK WASHERS.

ALUMINUM HOUSING AND GALVANIZED STEEL STRAP PREVENT MAGNETIC-FIELD CABLE HEATING ON AC INSTALLATIONS.

WHITE-GLAZE SPLIT PORCELAIN INSULATOR ELIMINATES THE NEED TO THREAD THE CABLES THROUGH THE SUPPORT.



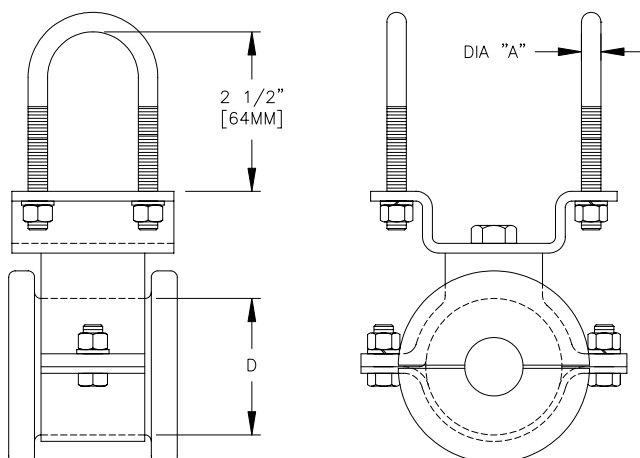
CATALOG NUMBER	HOUSING DIA "D"	MTG HOLES DIA "A"	WEIGHT PER 100
CF3801	2 5/8" [67MM]	7/16" [11MM]	180LB [82KG]
CF3811	3 1/8" [79MM]	7/16" [11MM]	200LB [91KG]
CF3821	3 3/4" [95MM]	7/16" [11MM]	220LB [100KG]

NOTE: INSULATORS TO BE ORDERED SEPARATELY

PIPE MOUNT BRACKET

USED TO SUPPORT CABLES MOUNTED ON PIPES

BRACKET CONSTRUCTION AND SIZE ARE THE SAME AS THE BASE MOUNTED BRACKETS.

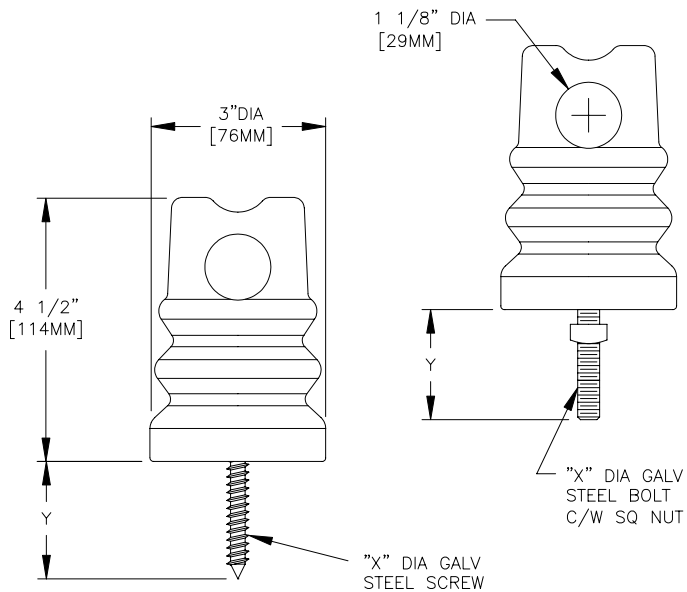


CATALOG NUMBER	HOUSING DIA "D"	U BOLT DIA "A"	WEIGHT PER 100
CF3800	2 5/8" [67MM]	3/8" [10MM]	240LB [109KG]
CF3810	3 1/8" [79MM]	3/8" [10MM]	260LB [118KG]
CF3820	3 3/4" [95MM]	3/8" [10MM]	280LB [127KG]

NOTE: INSULATORS TO BE ORDERED SEPARATELY

PORCELAIN WIRE HOLDER

TYPE A - FOR PRIMARY LEAD WIRE

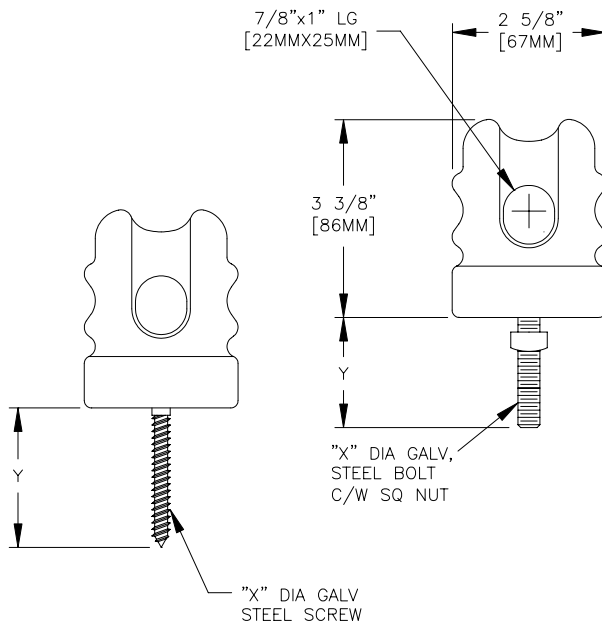


PORCELAIN COLOUR - GREY

CATALOG NUMBER	"Y"	"X" DIA BOLT/SCREW	WEIGHT PER 100
IF7010	2" 51MM	5/16" DIA SCREW 8MM	145LB 66KG
IF7011	1 1/2" 38MM	3/8" DIA SCREW 10MM	150LB 68KG
IF7012	3" 76MM	5/16" DIA SCREW 8MM	150LB 68KG
IF7013	2 1/2" 64MM	3/8" DIA SCREW 10MM	155LB 70KG
IF7015	2" 51MM	3/8" DIA SCREW 10MM	150LB 68KG
IF7016	3" 76MM	3/8" DIA SCREW 10MM	165LB 75KG
IF7020	1 1/4" 32MM	3/8" DIA BOLT 10MM	145LB 66KG

OTHER BOLT/SCREW SIZE & LENGTH AVAILABLE ON REQUEST.

TYPE B - FOR SERVICE DROP WIRE



PORCELAIN COLOUR - GREY

CATALOG NUMBER	"Y"	"X" DIA BOLT/SCREW	WEIGHT PER 100
IF7025	1 1/4" 32MM	3/8" DIA BOLT 10MM	135LB 61KG
IF7014	2 1/4" 57MM	5/16" DIA SCREW 8MM	130LB 59KG

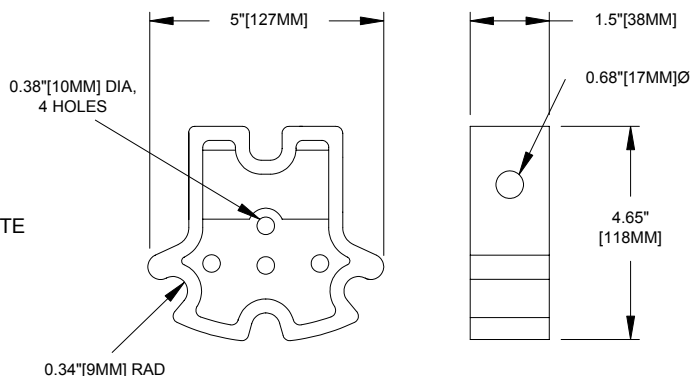
OTHER BOLT/SCREW SIZE & LENGTH AVAILABLE ON REQUEST.

SPREADER BRACKET

CABLE SPREADER

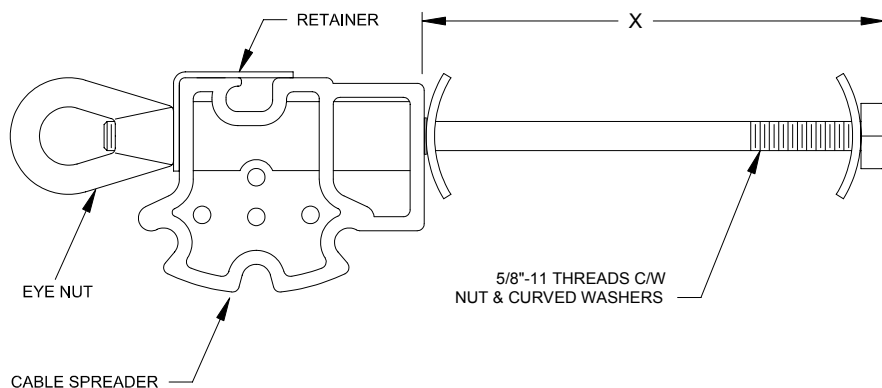
CATALOG NO.: 2910
WEIGHT: 0.5LB[0.2KG]
MATERIAL: BLACK POLYETHYLENE

DESIGNED TO HANDLE UP TO FOUR CONDUCTORS, THE CABLE SPREADER IS MADE FROM A BLACK POLYETHYLENE MATERIAL. USE OF THE SPREADER IS SAFE, EASY AND AN ECONOMICAL WAY TO SEPARATE THE PHASE CONDUCTORS AND BARE NEUTRAL.



SPREADER BRACKET ASSEMBLY

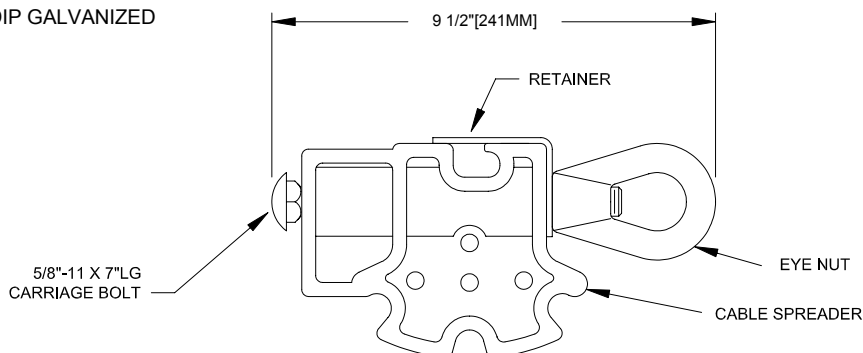
STEEL COMPONENTS ARE HOT DIP GALVANIZED



CATALOG NUMBER	"X"	WEIGHT
2925	10" 254MM	3.5LB 1.6KG
2926	12" 305MM	3.8LB 1.7KG
2927	14" 356MM	4.1LB 1.9KG

TRIPLEX POLE BAND BRACKET

CATALOG NO.: 3390
WEIGHT: 2LB[0.9KG]
STEEL COMPONENTS ARE HOT DIP GALVANIZED



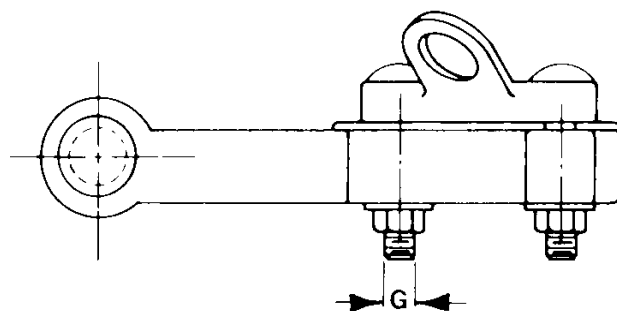
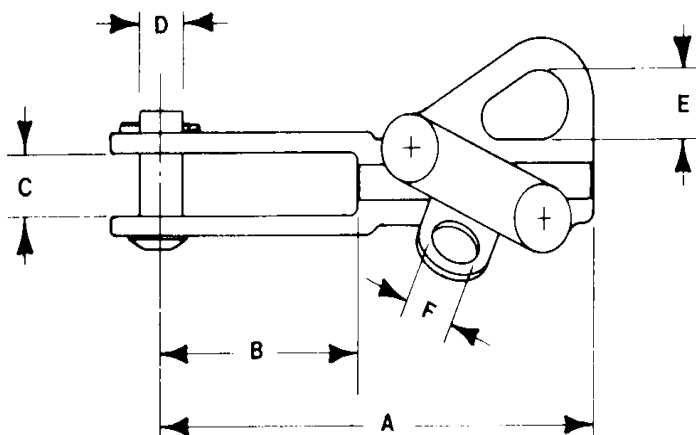
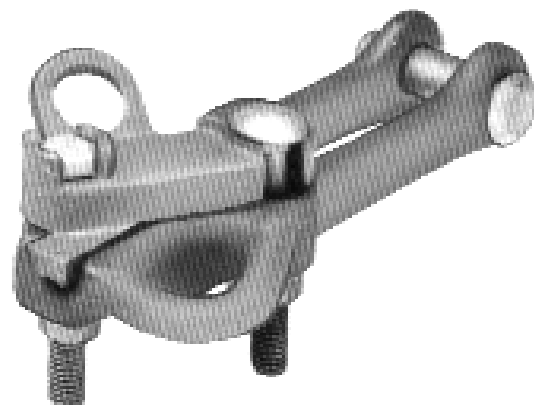
BOLTED DEAD END CLAMP

ALUMINUM STRAIGHT LINE BOLTED DEAD ENDS

Firon Aluminum Straight Line Bolted Dead End Clamps feature swing away design cable entry and incorporate heat treated primary grade aluminum castings with grade five, high strength fasteners. A favorite of linemen for dead ending and temporary openers, Firon Dead Ends exhibit reduced installation time, eliminate conductor damage and increase installer safety.

The beam structure of the keeper casting and top quality fasteners combine to produce Dead Ends stronger than the cable they encircle.

An integral large pulling eye provides ease of operation to connect and disconnect the come along hook.

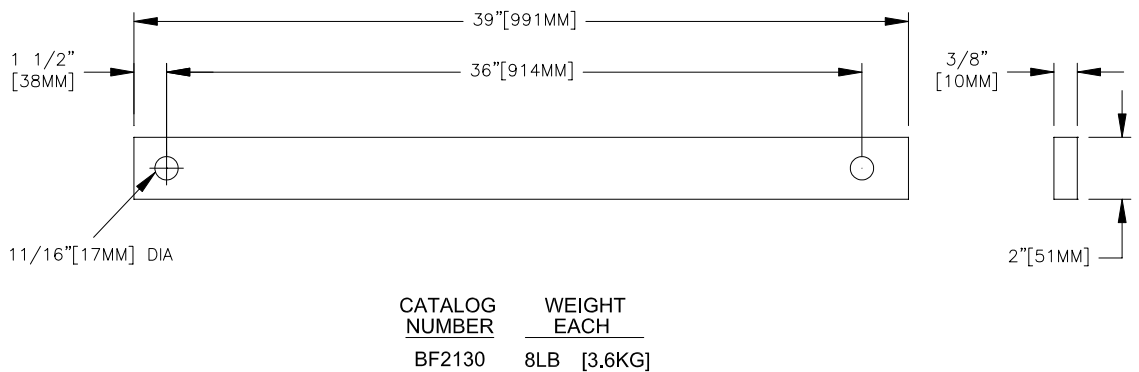
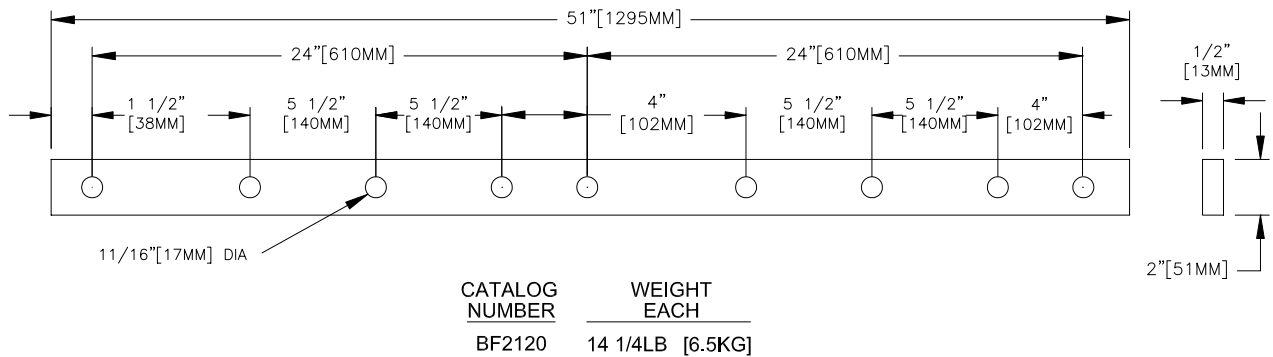
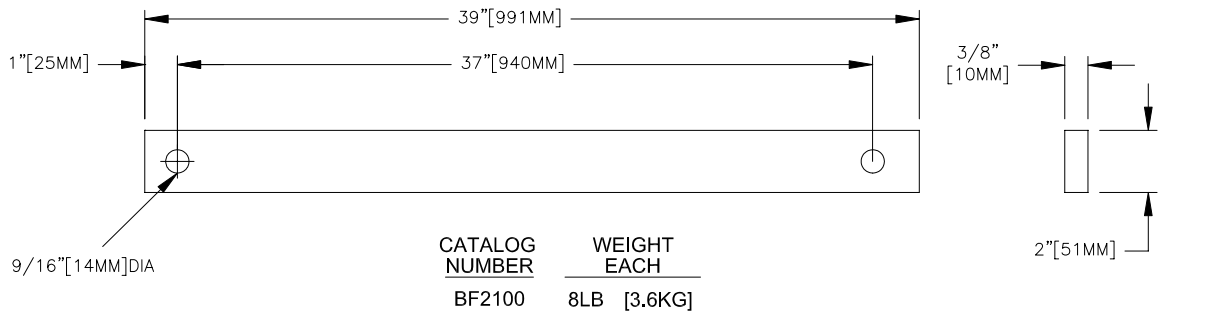


CATALOG NO.	CONDUCTOR RANGE		APPROXIMATE DIMENSION (INCHES)							OVERALL WIDTH
	MAX	MIN	A	B	C	D	E	F	G	
3358	2/0 ACSR	6 ACSR	6 5/8	3	3/4	5/8	7/8		3/8	3
3355	397.5 ACSR	4 ACSR	10	5	3/4	5/8	1	7/8	1/2	3 1/4
3352	477 ACSR 556 AAC	3/0 ACSR	10 1/8	5 1/4	3/4	5/8	1	7/8	1/2	3 7/8

CROSSARM BRACE

FLAT CROSSARM BRACES

HOT DIP GALVANIZED STEEL



CLEVIS ASSEMBLY

SCREW TYPE

CATALOG NO.: CF4700

WEIGHT: 2LB[0.91KG]

MATERIAL: HOT DIP GALVANIZED STEEL

