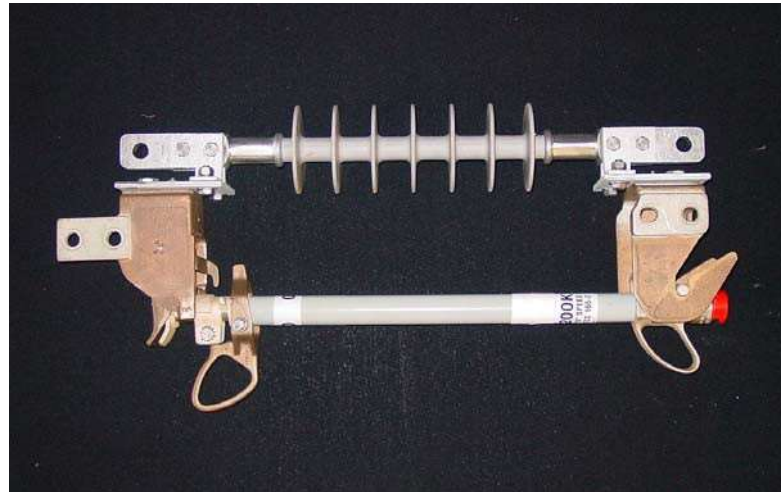


ULTRA-LIGHT IN-LINE POWER FUSE MOUNTING



APPLICATION

The Ultra-Light In-line Power Fuse Mounting is similar in function and design to the standard "IF" fused switch. But when installed with the appropriate power fuse barrel, it will provide greater protection to distribution feeder circuits & lines than conventional switches, currently used.

Because of increased demands for electric power to feed heavier loads, larger transformers are often being utilized. This has increased the short circuit interruption requirements beyond the capabilities of the existing fused in-line switch or cutout.

The exhaust generated, during interruption of the fuse is minimal and nonconductive, whereas the existing fused switch or cutout discharges a highly ionized cloud of gas. This allows a smaller phase spacing of the conductors, which is an asset, when retrofitting into an existing circuit.

The mounting can be opened or closed with an insulated hook stick and therefore may be used for opening and closing unloaded circuits, as such the switch acts like a normal disconnect eliminating the need for another disconnect to divide circuits. The mounting is also equipped with Loadbuster™ hooks; therefore, a line man equipped with a Loadbuster™ tool can open circuits under load.

Two voltage rated units, 25kV and 27kV are available to meet the user's needs. These units are mounted on Silicone dead end type insulators, which exceed leakage distances of porcelain type cutouts.

The Ultra-Light Power Fuse mounting accepts the following fuses (200 Amp Maximum):

- 1) S & C type SMU 20.
- 2) Eaton type DBU.
- 3) Cooper type CMU.

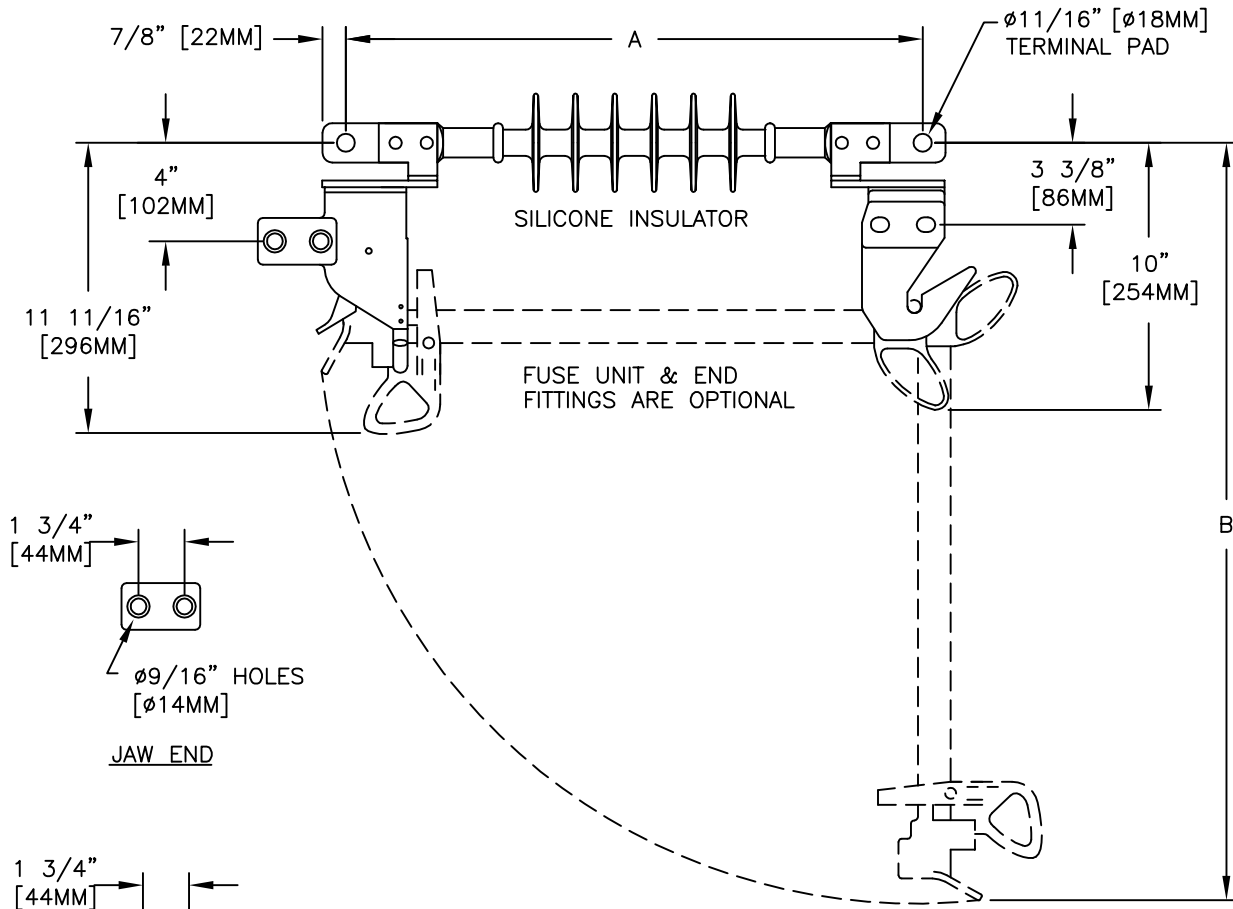
CONSTRUCTION

Mounted on a Silicone insulator with galvanized steel mounting plates, the hinge and jaw assemblies are constructed from a tin plated cast bronze. Stainless steel back-up springs and nickel plated copper contacts, over-plated with silver, minimize contact resistance and ensure excellent continuous contact throughout the life of the unit.

Load break hooks for use with the Loadbuster™ tool are standard and serve as a "close-in" guide to ensure positive closure.

The insulator is a strain insulator type with tongue terminations at each end. The jaw and hinge ends of the mounting come with a standard two hole Nema pad.

ULTRA-LIGHT IN-LINE POWER FUSE MOUNTING



DIMENSIONS AND WEIGHTS

CATALOG NUMBER	A		B		WEIGHT	
	IN.	MM.	IN.	MM.	LB	KG
IF20-25	22.9	582	28 1/2	723	17	7.7
IF20-28	22.9	582	34 3/4	883	18	8.2
IF20-35	27.4	695	34 1/2	876	17	7.7

POWER FUSE MOUNTING SPECIFICATIONS

CATALOG NUMBER	RATED VOLTAGE	MAX VOLTAGE	NOMINAL BIL	CURRENT	
				RATED	MOM
IF20-25	25kV	27kV	150 kV	200A	20,000A
IF20-28	27kV*	29kV	170 kV	200A	20,000A
IF20-35	35kV	38kV	200 kV	200A	20,000A

NOTE: 1) *USE 34.5kV FUSE UNIT TO MEET 29kV MAX, 170kV BIL RATING.
 2) 15kV UNIT AVAILABLE UPON REQUEST.

OPTIONS:

- FOR TWO SETS OF SWITCH TERMINAL CONNECTORS, (CATALOG NUMBER 9920), ADD SUFFIX "C" TO THE CATALOG NUMBER. i.e. IF20-25C